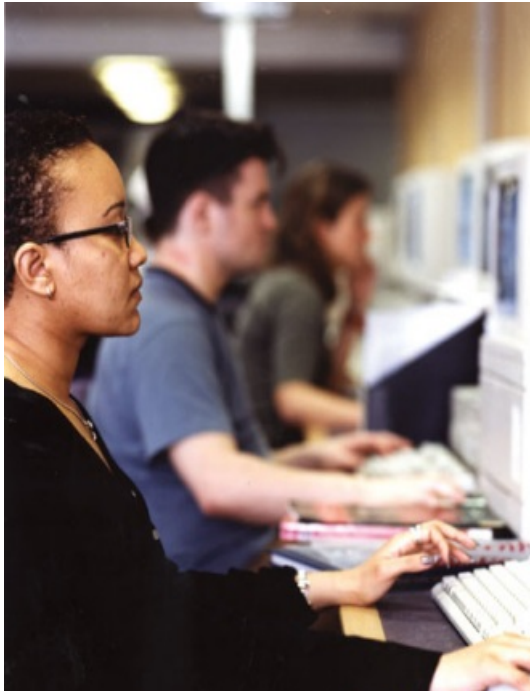


# Leicester Training & Employment Centres Feasibility Study

City Strategy Leicester



## Brief

BE Group was commissioned by City Strategy Leicester to undertake a feasibility study into establishing two new training and employment centres in the wards of Braunstone, New Parks and St Matthews in Leicester.

The study assessed the need for additional services in these areas and determined where there are service gaps.

City Strategy Leicester want to have the two new Access Centres open by March 2009.

## Activities

- Mapped adult learning provision across each of the three wards
- Identified suitable centres to host training and employment support
- Consulted with stakeholders and programme managers at Leicester City Council, as well as with key learning providers
- Assessed centres covering their management arrangements, key issues, service delivery and provided costed designs where appropriate.

## Outcome

Two centres were identified to be able to deliver Access Centre services in the required timescale - one in Braunstone and one in New Parks.

Capital costs are estimated to be in the region of £90,000. Revenue costs are expected to be in the region of £60,000 per year.

A further Centre in St Matthews has the potential to be an Access Centre, but outside the March 2009 timescale required.

