

Melton Access Centre Feasibility Study

Melton Partnership Works

Brief

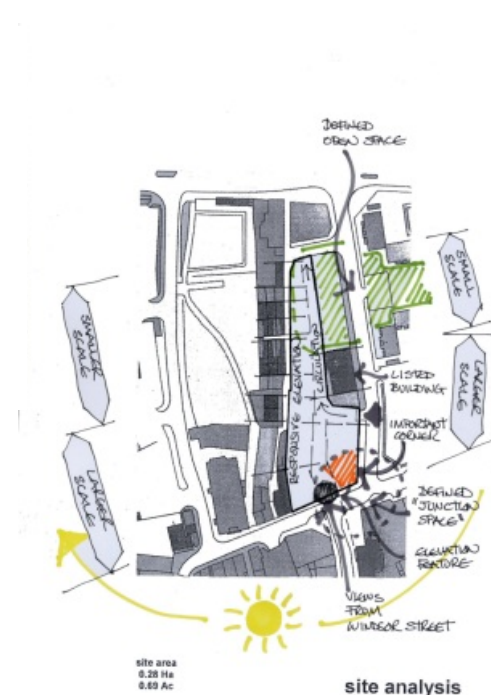
Melton Partnership Works is a joint venture comprising Brooksby Melton College, Melton Mencap, Leicestershire County Council Libraries and Social Services. They asked us to develop proposals to establish a multi-functional community centre in Melton.

A new centre was required to improve and consolidate various facilities for the local population, including those for the disabled. The intention is to secure funding for its construction under East Midlands Development Agency's Access Centre programme.



Activities

- Looked at the space and staffing needs of the various organisations looking to co-locate in the centre; and how they would work together
- Consulted other organisations to see if they were interested in also being part of the centre
- Assessed potential development sites
- Developed indicative designs and costings for the centre
- Held workshops with the various organisations to understand how they would work together, what the centre's aims would be; how the centre would be run and managed.



Outcome

BE Group identified a suitable site in the town centre for the building. A fully costed design was developed incorporating the various site constraints, such as its small size and linear shape. The design maximised the use of space, and enhanced the principle of 'access', opening out the building by installing a central corridor and atrium.

Our work also confirmed the organisational and managerial structure of the centre, to maximise its efficient operation.

